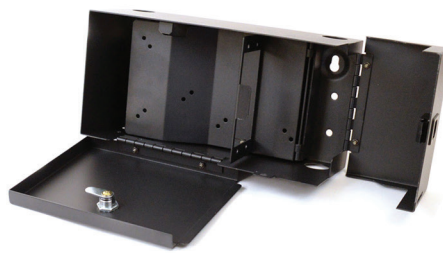
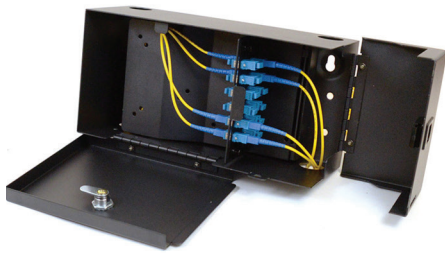




WTB-FWM-012 2 LGX, Wall Mount with Lockable Compartment

FIBERTRONICS 



The WTB-FWM-012 is a compact, high-density wall-mount fiber optic enclosure.

The unit has 2 LGX adapter panel positions allowing for a wide range of fiber termination connector types. It is equipped with a set of keys that allow access to the network side of the panel. If required a padlock can be added to the distribution side allowing for separation and security between the network and distribution sides of the termination panel.

Product Features

- 2 LGX Adapter Panels
- 1 Slack Spool
- Compact
- High Density
- Swing-out Panel
- Powder Coated
- 2 Outer Doors
- 1 Door with Keyed Lock
- 1 Door with Padlock Option (Padlock not included)
- Screw Holes on the rear panel

Technical Specifications

Below are the specifications of this wall-mountable, fiber optic patch panel. These include patch panel positions, ports, dimensions and materials.

Capacity:	2 LGX Adapter Panels
Port:	4 Port - Ø30mm (1.18")
Lockable:	Yes
Type:	Double Doors
Material:	16 Gauge Powder Coated Steel
Height:	152.4mm (6.0")
Width:	304.8 (12.0")
Depth:	114.3mm (4.5")
Weight:	3.26kg (7.18lbs)
Color:	Black

Accessories

Below is a list of the accessories that are included with this product.

Keys:	2
Cable Ties:	5
Grommets:	4
Cable Management Rings:	2
Laser Warning Labels:	1
Location Label:	1
Grounding Screw:	1

Please Note: Mounting hardware is not included.