

# FC Adapters

**FIBERTRONICS** 



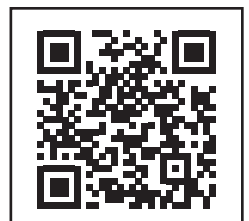
**Fibertronics offers a variety of high quality FC Adapters, also known as FC Mating Sleeves.**

These are bulkhead adapters that mount into patch panels and adapter plates, and are available in square, round and oval mount configurations with a choice of zirconia straight, or phosphor bronze straight split sleeves.

## Features & Specifications

- Available in Oval, Round and Square configurations
- Works with both single-mode and multimode applications
- Available in UPC and APC
- High quality and durable Ni-Plated Brass body
- Typical insertion loss under 0.05dB and maximum of 0.2dB
- Adapters ship with standard colored dust caps
- Fast and easy connection

Scan to visit our store



# FC/UPC and FC/APC Adapters

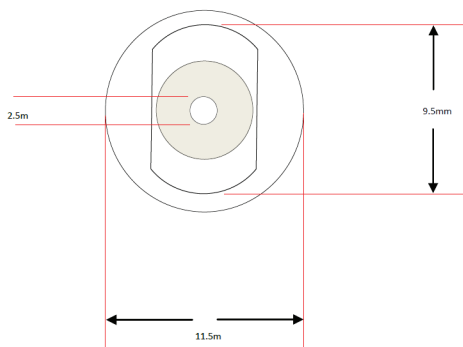
Fiber Channel adapters, or FC adapters are available in either Ultra Physical Contact (UPC) or Angled Physical Contact (APC) variants. In addition to this, they are also available single-mode and multimode in oval, round and square configurations with different flange size options.

Below is a breakdown of some of the various FC adapters that are available from Fibertronics.

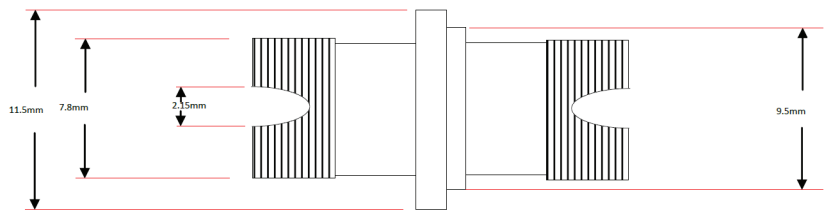
## FC Round Adapters, 11mm

All measurements are in millimeters unless otherwise stated

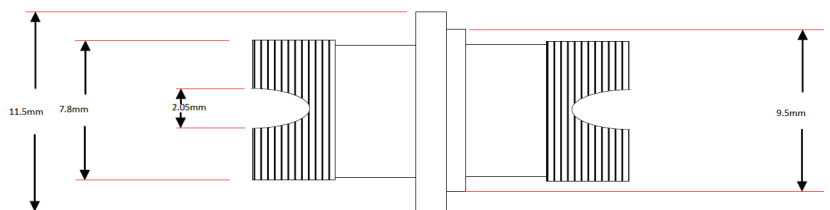
Front View: Standard FC



Side View: Standard FC/UPC



Side View: Standard FC/APC



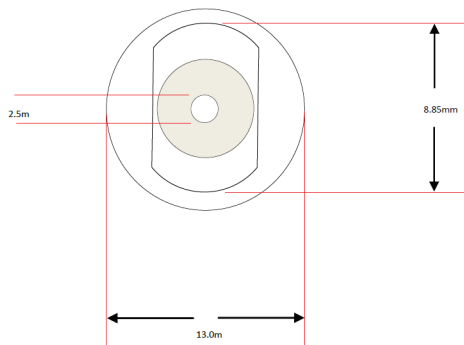
FC/UPC adapters have 2.15mm wide keys and FC/APC adapters have 2.05mm wide keys.

Ordering Options	
<b>FT-ADSX-FCSMR</b>	FC/UPC, Singlemode, Round Adapter, 11mm Flange
<b>FT-ADSX-FCMMR</b>	FC/UPS, Multimode, Round Adapter, 11mm Flange
<b>FT-ADSX-FCASMR</b>	FC/APC, Singlemode, Round Adapter, 11mm Flange

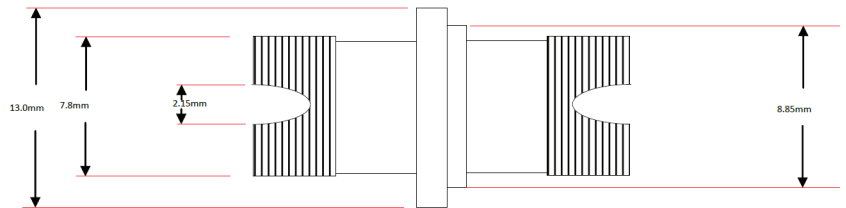
## FC Round Adapters, 13mm

All measurements are in millimeters unless otherwise stated

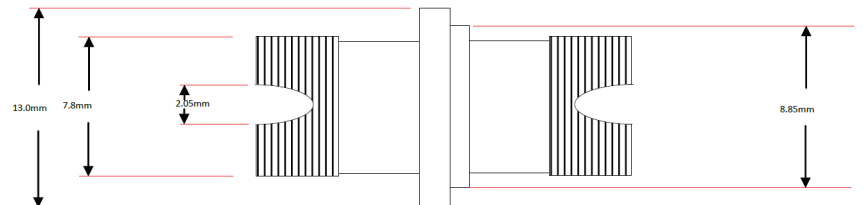
Front View: Standard FC



Side View: Standard FC/UPC



Side View: Standard FC/APC



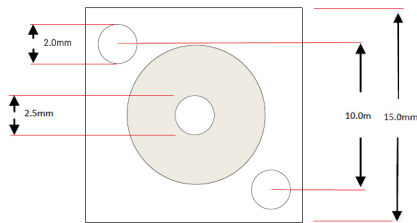
FC/UPC adapters have 2.15mm wide keys and FC/APC adapters have 2.05mm wide keys.

Ordering Options	
<b>FT-ADSX-FCSMR13</b>	FC/UPS, Singlemode, Round Adapter, 13mm Flange
<b>FT-ADSX-FCMMR13</b>	FC/UPS, Multimode, Round Adapter, 13mm Flange
<b>FT-ADSX-FCASMR13</b>	FC/APC, Singlemode, Round Adapter, 13mm Flange

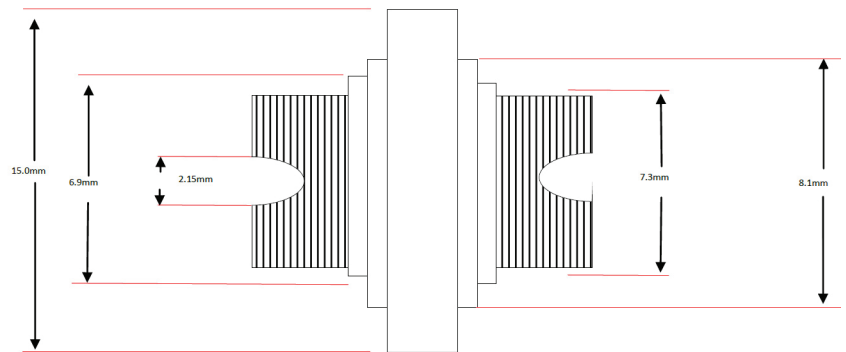
## FC Square Adapters

All measurements are in millimeters unless otherwise stated

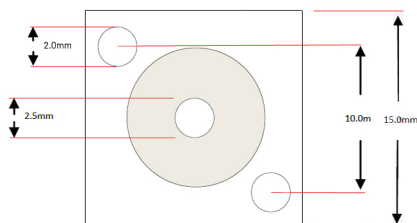
Front View: Standard FC/UPC



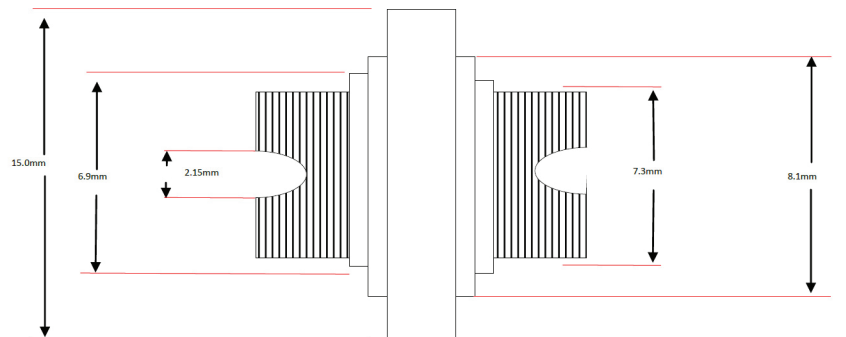
Side View: Standard FC/UPC



Front View: Standard FC/APC



Side View: Standard FC/APC



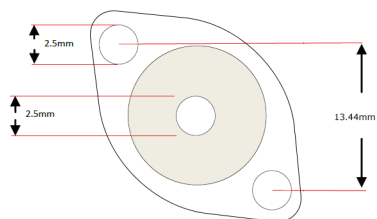
FC/UPC adapters have 2.15mm wide keys and FC/APC adapters have 2.05mm wide keys.

Ordering Options	
<b>FT-ADSX-FCSMS</b>	FC/UPC, Singlemode, Square Adapter
<b>FT-ADSX-FCMMS</b>	FC/UPS, Multimode, Square Adapter
<b>FT-ADSX-FCASMS</b>	FC/APC, Singlemode, Round Adapter

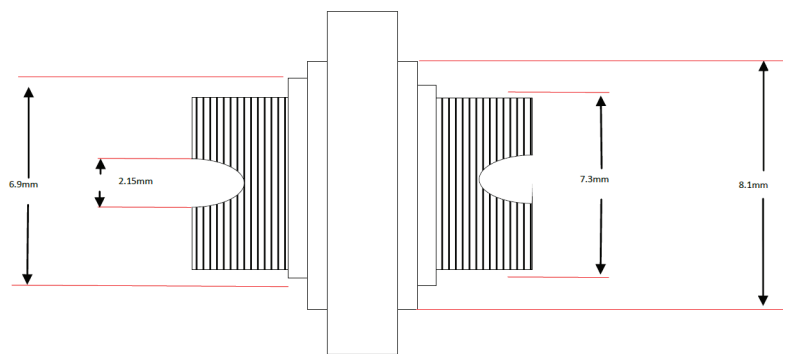
## FC Oval Adapters

All measurements are in millimeters unless otherwise stated

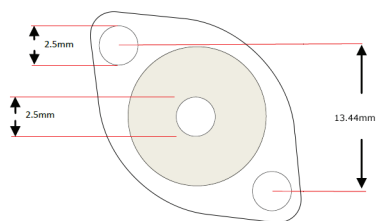
Front View: Standard FC/UPC



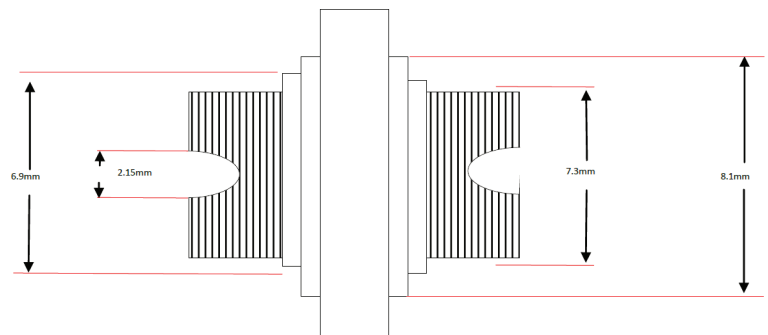
Side View: Standard FC/UPC



Front View: Standard FC/APC



Side View: Standard FC/APC



FC/UPC adapters have 2.15mm wide keys and FC/APC adapters have 2.05mm wide keys.

Ordering Options	
<b>FT-ADSX-FCSMO</b>	FC/UPC, Singlemode, Oval Adapter
<b>FT-ADSX-FCASMO</b>	FC/APC, Singlemode, Round Adapter