

Ethernet Patch Cables

FIBERTRONICS 



If you're in the market for Ethernet Cable you're in the right place. Available from Fibertronics individually or in bulk with 'Snagless' boots.

While searching for network cables you will most likely come across a few different types, these include the most commonly available ones which are divided into 3 different categories, Cat5, Cat5e and Cat6.

Features & Specifications

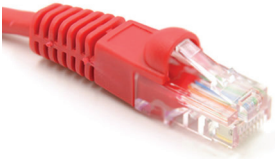
Category:	Cat5e	Cat6
Frequency:	100 MHz	250 MHz
Attenuation:	22 db	19.8 db
Return Loss (min. at 100 MHz):	20.1 db	20.1 db
Networks Supported:	1000BASE-T	1000BASE-TX

Scan to visit our store



A Quick Guide To Ethernet Patch Cables

Cat5 Ethernet Cable



Cat5 cables (Category 5) are the slowest in the family, handling speeds of 10/100 Mbps at 100 MHz. It may sound like a lot, but it really isn't in today's world. Cat5 cables are rapidly being phased out of use.

Please Note: Fibertronics no longer stocks Cat5 cables due to their obsolescence.

Cat5e Ethernet Cable



The 'e' in Cat5e stands for enhanced. These are the most commonly used cables today due to their ability to reduce cross-talk.

Cat5e Ethernet Cables are capable of handling speeds of up to 1000 Mbps (known as Gigabit Ethernet) at 100 MHz. This is a vast improvement over the older Cat5 cables.

Cat6 Ethernet Cable



Cat6 cables are a vast improvement over Cat5e cables. Capable of handling speeds of up to 10 Gigabits (10x faster than Cat5e) at 250 MHz. They also improve the reduction of cross-talk by making use of an internal separator that isolates cable pairs from each other. They are also backwards-compatible with both Cat5 and Cat5e installations.

Cat5e vs Cat6 Cables, Which is Best?

When choosing between Cat5e and Cat6 two factors should be taken into consideration:

Speed vs Budget

Cat5e are lower cost when compared to Cat6, however their speeds are more suited to home use applications. Cat6 on the other hand are marginally more expensive but offer 10x the speed and are generally considered ideal for big business applications or for those looking to future-proof their installations.