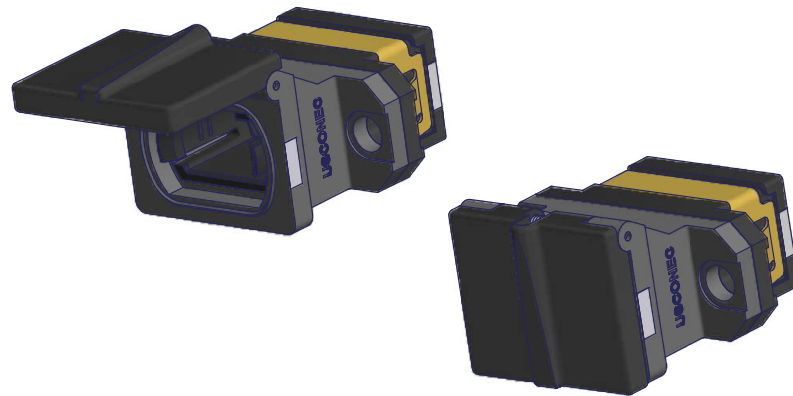


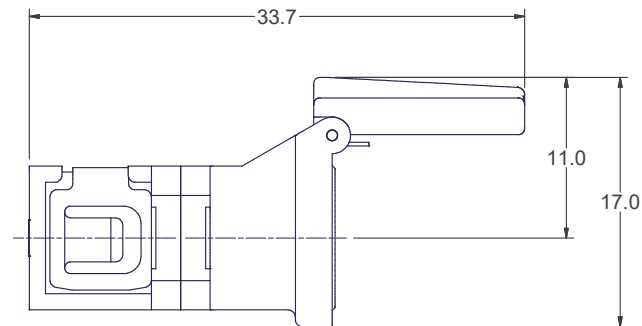
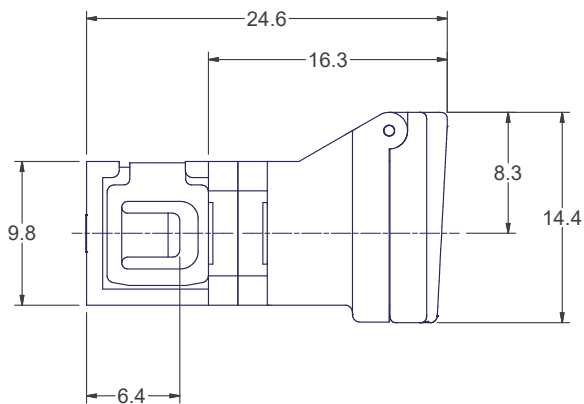
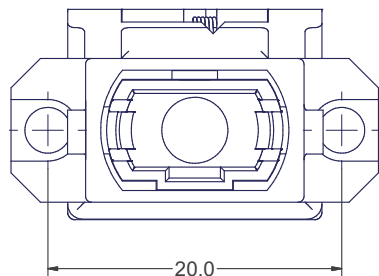
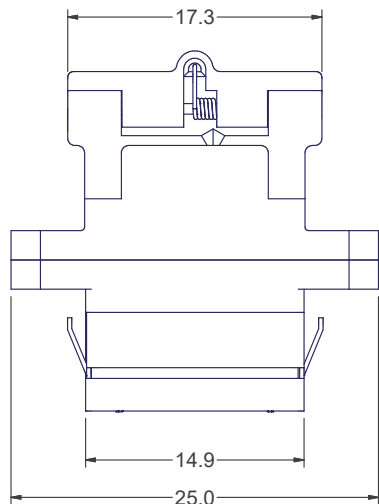
8 | 7 | 6 | 5 | 4 | 3 | 2 | 1

FEATURES

1. MOUNTS IN 1.75mm BULKHEAD
2. RECOMMEND USE OF M2.5 OR 4-40 SCREW, OR SCREW W/ NUT, SCREW HEAD DIAMETER & NUT WIDTH ≤ 5mm. (SCREW & NUT NOT PROVIDED). RECOMMEND 2in-lbf TORQUE FOR SCREW MOUNT APPLICATIONS.



PART	MATERIAL
ADAPTER BODY	POLYETHERIMIDE
INNER ADAPTER	POLYETHERIMIDE
SHUTTER DOOR	POLYETHERIMIDE
GASKET	ELASTOMER
HINGE PIN	STAINLESS STEEL
SPRING	STAINLESS STEEL
SPRING CLIP	STAINLESS STEEL



SHUTTER OPEN

P/N	STANDARDS REFERENCE	KEY STATUS	COLOR
8835	TIA-604-5 KEYING OPTION 1	OPPOSED KEYS	BLACK
9518	TIA-604-5 KEYING OPTION 2	ALIGNED KEYS	GREY
12431	TIA-604-5 KEYING OPTION 1	OPPOSED KEYS	AQUA
15333	TIA-604-5 KEYING OPTION 1	OPPOSED KEYS	MAGENTA
23256	TIA-604-5 KEYING OPTION 1	OPPOSED KEYS	GREEN

USCONEC LTD. PROPRIETARY
THIS DOCUMENT AND THE ASSOCIATED DATA CONTAIN RESTRICTED INFORMATION THAT IS USCONEC LTD. PROPERTY. DISCLOSE OR DUPLICATE FOR OTHERS ONLY AS AUTHORIZED BY USCONEC LTD.

Material: SEE TABLE ABOVE

REV	DATE	DESCRIPTION	ECN
C	8/3/09	ADDED P/N 12431 TO TABLE	01151
D1	4/29/13	ADDED P/N 15333; ADDED MATERIAL TABLE; NOTE 2 WAS 3mm SCREWS	01578
D	4/30/13	RELEASE	01578
E	8/5/21	ADD'D P/N 23256 (GREEN OPTION) TO TABLE	2404-mm

CUSTOMER DRAWING

DIMENSIONS FOR REFERENCE ONLY

THIRD ANGLE PROJECTION



METRIC/mm

▲ DENOTES CRITICAL DIMENSION



Hickory, NC
800-769-0944
www.usconec.com

TITLE
**ASSY, ADAPTER,
SHUTTERED, MTP®**

SIZE	S&M Part No.:	DWG NO.	REV
B	SEE TABLE	C8835	E
SCALE	Drafter	Date:	SHEET
N.T.S.	M. YOUNT	6/8/2007	1 OF 1

8 | 7 | 6 | 5 | 4 | 3 | 2 | 1